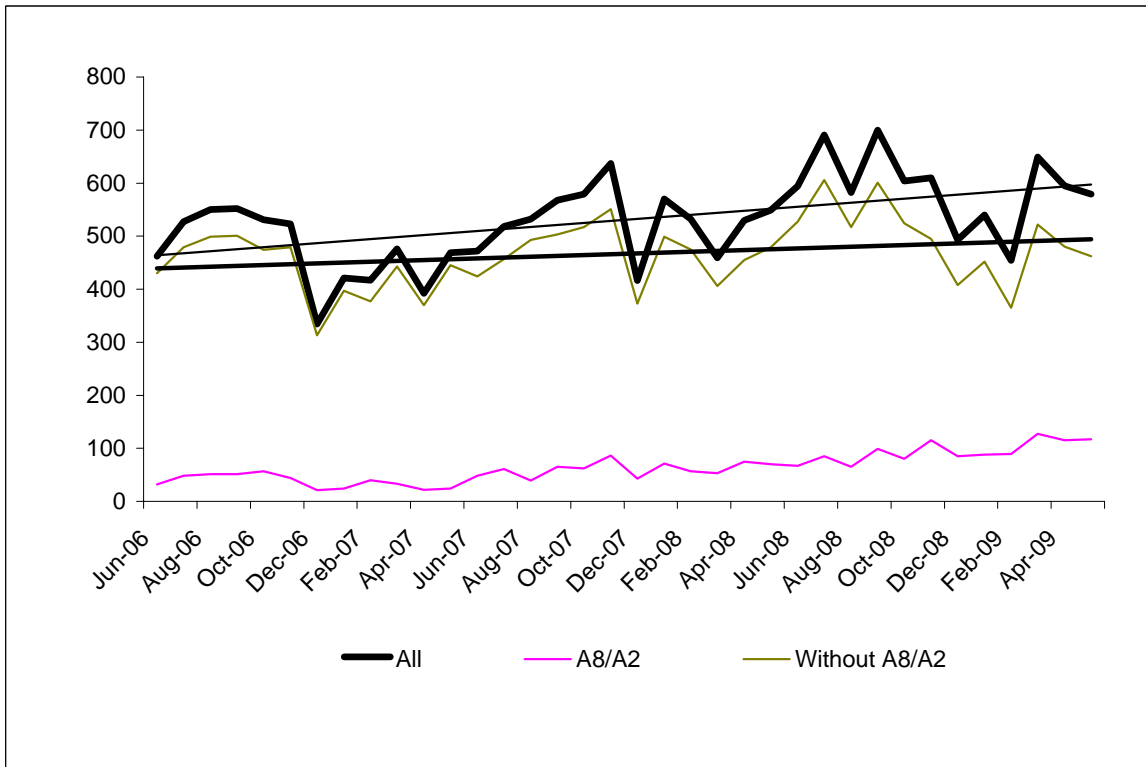


1 **Headline figures**

Number of people seen rough sleeping 2008/09	3472
Number of people seen rough sleeping Mar/Apr 2009	1005

*new two month reporting periods are being used to reflect the bi annual meetings of the London delivery board. These are applied in figures (c)-(f)

Figure (a) Rough sleeping by month June 06 – May 09



The thinner trendline includes all rough sleepers.

The thicker trendline excludes rough sleepers from A8 and A2 countries.

2 Flow, stock and returner 2008/09

The flow, stock and returner model helps us understand the profile of rough sleepers in London.

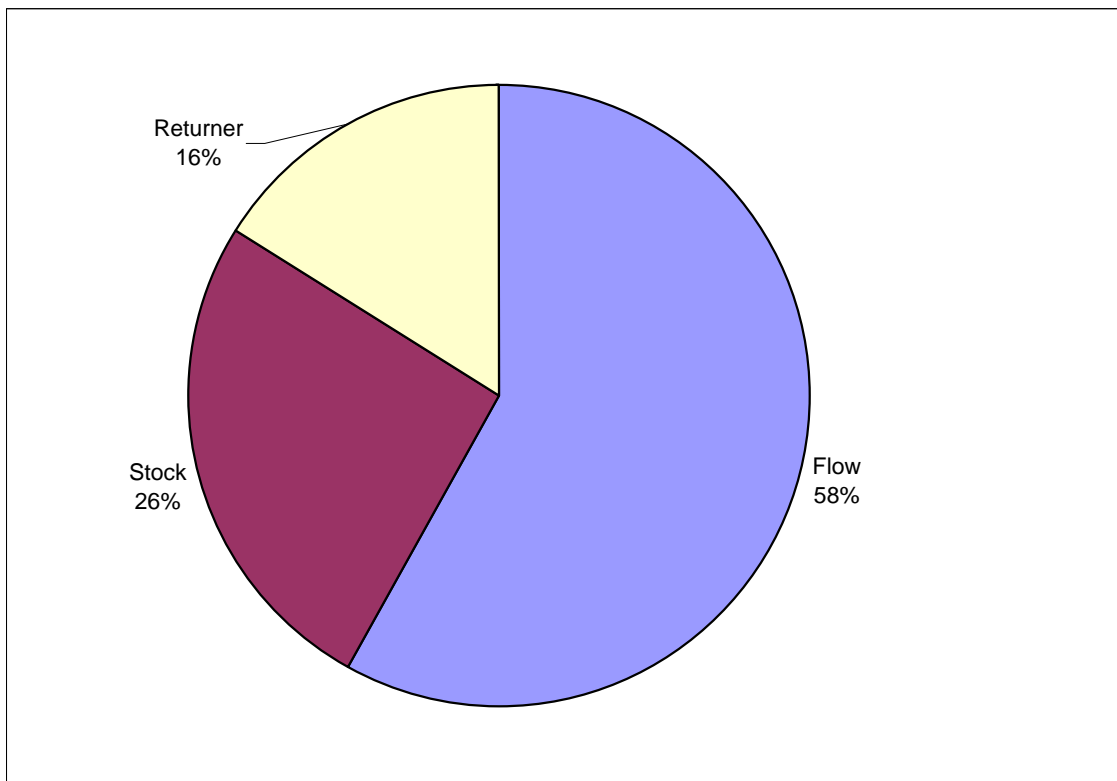
Flow: People recorded rough sleeping for the first time on CHAIN.

Stock: People who have slept rough in at least two consecutive years.

Returners: People who have slept rough after an absence of at least one previous year.

Figure (b) shows the figures for 2008/09.

Figure (b) Flow, stock and returner figures for 2008/09



Flow	2012	58%
Stock	902	26%
Returner	558	16%
TOTAL	3472	

Please note that the flow, stock and returner categories are based on a client's entire history on CHAIN. For example a client may be new to a borough but have slept rough in another borough in the previous period. In this example, the client would be counted as stock.

2 Trends versus targets to reduce rough sleeping

The following graphs have two trend lines:

The shorter lines showing **actual rough sleeping figures**

The longer lines which show **illustrative trendlines which would result in zero rough sleeping** by 2012 (or 30 in the case of 'flow' and street counts).

Figure (c) is for rough sleeping overall, (d) is for flow, (e) is for stock (f) is for returners and (g) for yearly street count data (collated by CLG taking the most recent street count figures available in June)

Figure (c) Rough sleeping overall

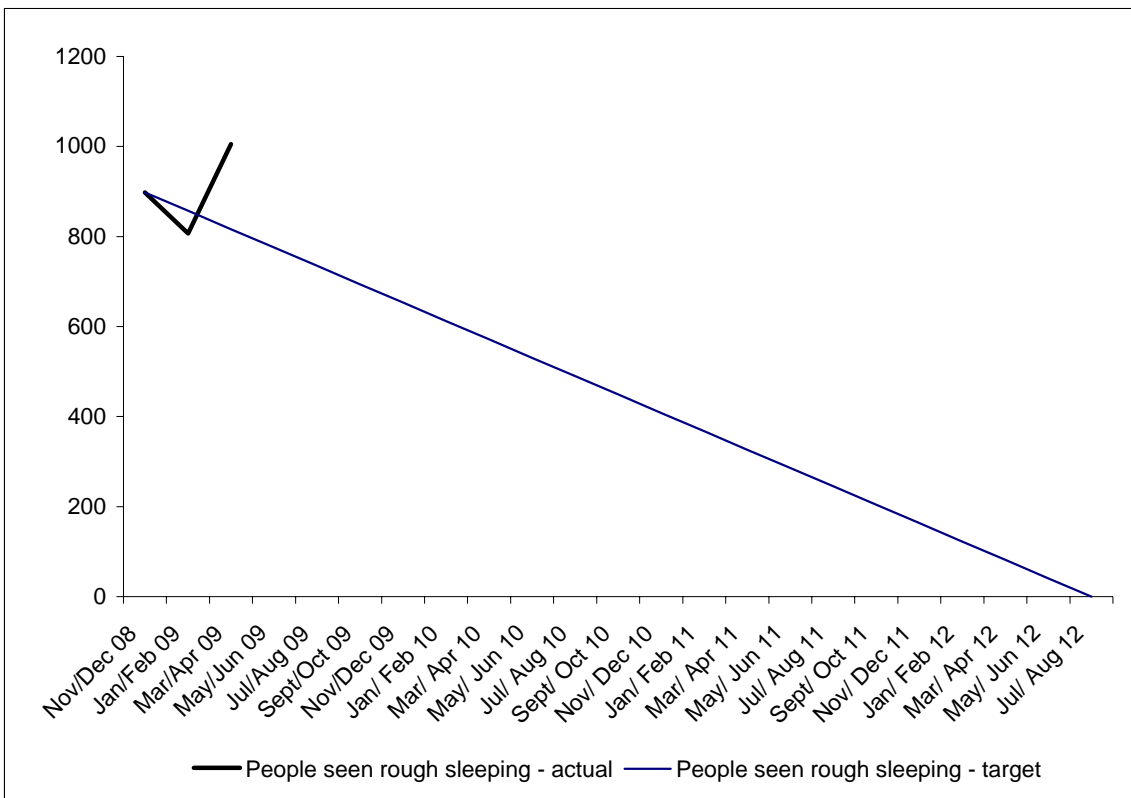


Figure (d) Flow

This graph shows people who have been seen rough sleeping for the first time on CHAIN in Mar/Apr 09 period.

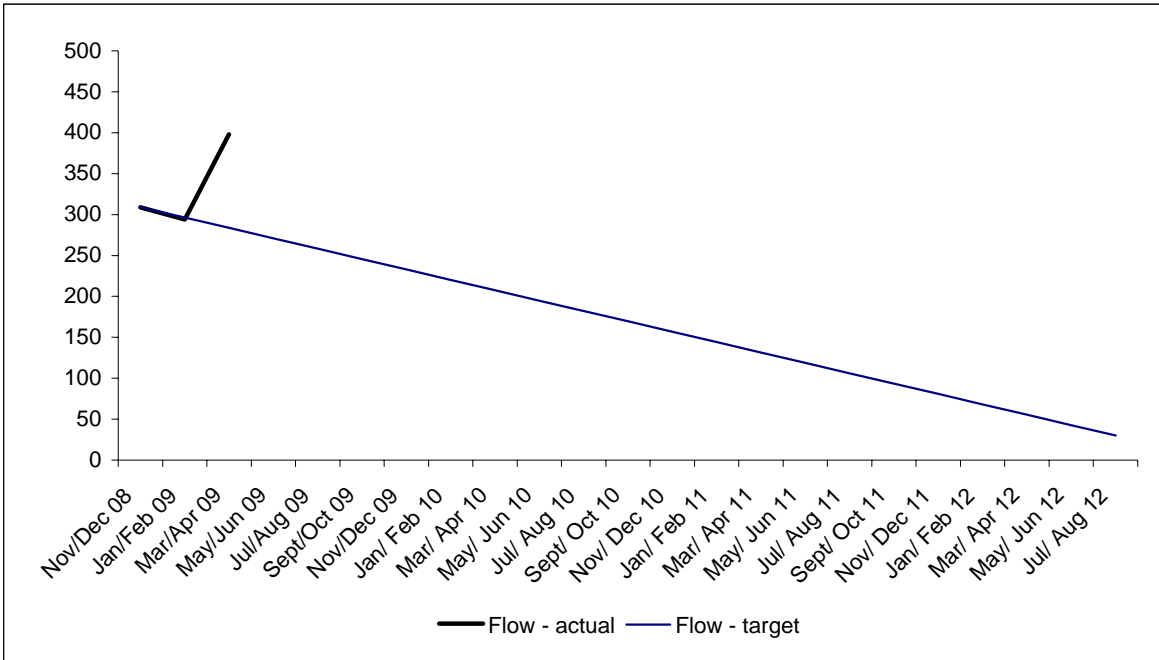


Figure (e) Stock

This graph shows people who have been seen rough sleeping during the Mar/Apr 09 period in addition to having been seen rough sleeping some time during the previous year.

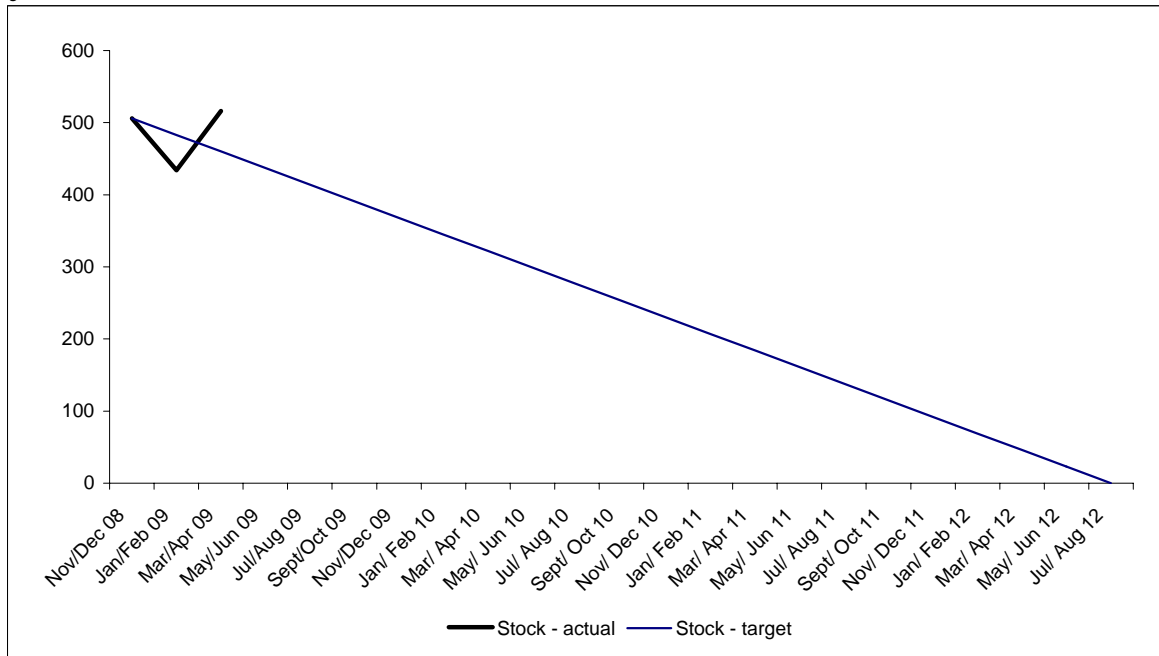


Figure (f) Returners

This graph shows people who have returned to rough sleeping this period having not been seen rough sleeping for at least a year.

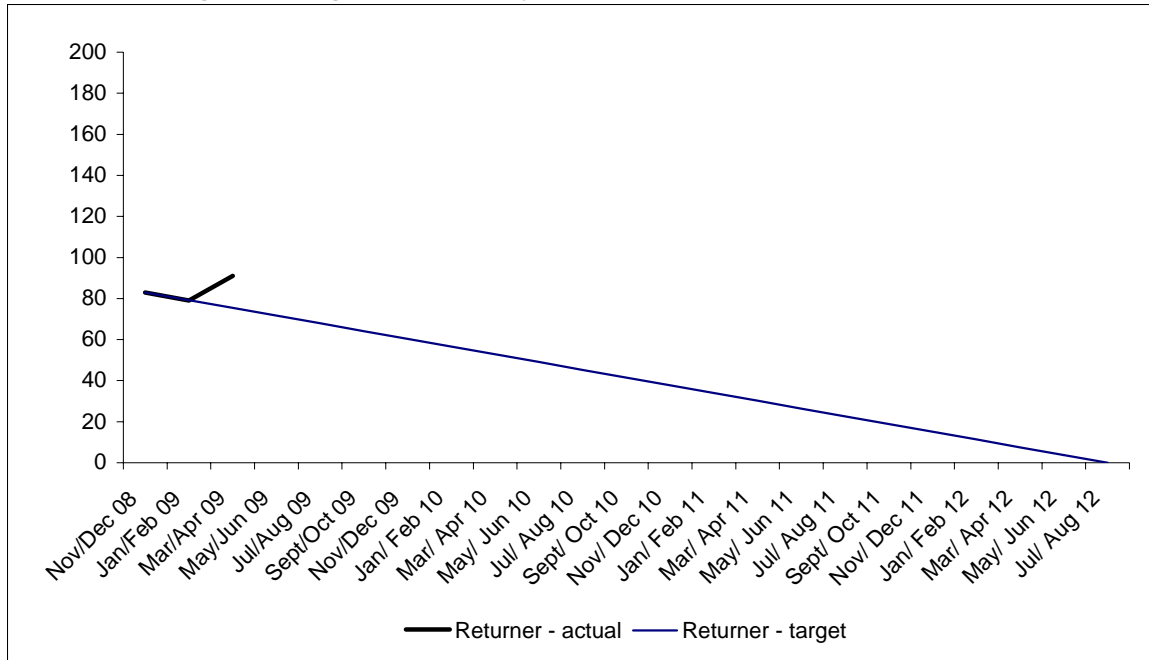


Figure (g) Street count data (yearly)

